

NEW  
SINGLE PHASE

# ATyS M

Single and three phase modular Automatic Transfer Switch from 40 to 160 A

SWITCH TO INNOVATION



# SOCOMEK: intelligent changeover systems

As a worldwide leading company in changeover power solutions, SOCOMEC brings a new innovative changeover concept based on switch technology dedicated to single phase or three phase replacement and safety power supply applications from 40 to 160 A.

## ATyS M: fully integrated control and automatic changeover functions

SOCOMEK has developed a new concept combining the benefits of switching technology and fast operation with unique control flexibility.

## ATyS M: a specific response to IEC or EN 60947-6-1 changeover switching standards

The new ATyS M modular changeover system has been designed, tested and proven according to the criteria in the international standard IEC 60947-3 and 60947-6-1. Its compliance with this standard guarantees a quality product which meets switching and changeover applications requirements.



APPLI 184 A

## References

### > 2 pole

#### ATyS M 3s



ATYSM 200-A

230 Vac	
40 A	1323 2004
63 A	1323 2006
80 A	1323 2008
100 A	1323 2010
125 A	1323 2012
160 A	1323 2016

#### ATyS M 6s



230 Vac	
40 A	1353 2004
63 A	1353 2006
80 A	1353 2008
100 A	1353 2010
125 A	1353 2012
160 A	1353 2016

### > 4 pole

#### ATyS M 3s



ATYSM 023-A

230 Vac	
40 A	1323 4004
63 A	1323 4006
80 A	1323 4008
100 A	1323 4010
125 A	1323 4012
160 A	1323 4016

#### ATyS M 6s



ATYSM 024-A

230/400 Vac	
40 A	1354 4004
63 A	1354 4006
80 A	1354 4008
100 A	1354 4010
125 A	1354 4012
160 A	1354 4016

127/230 Vac	
40 A	1353 4004
63 A	1353 4006
80 A	1353 4008
100 A	1353 4010
125 A	1353 4012
160 A	1353 4016

#### ATyS M 6e



ATYSM 022-A

#### Without communication

230/400 Vac	
40 A	1364 4004
63 A	1364 4006
80 A	1364 4008
100 A	1364 4010
125 A	1364 4012
160 A	1364 4016

127/230 Vac	
40 A	1363 4004
63 A	1363 4006
80 A	1363 4008
100 A	1363 4010
125 A	1363 4012
160 A	1363 4016

#### With communication

230/400 Vac	
40 A	1384 4004
63 A	1384 4006
80 A	1384 4008
100 A	1384 4010
125 A	1384 4012
160 A	1384 4016

127/230 Vac	
40 A	1383 4004
63 A	1383 4006
80 A	1383 4008
100 A	1383 4010
125 A	1383 4012
160 A	1383 4016

## The fully integrated ATyS solution

The best of switching and control technology dedicated to changeover applications

### SWITCHING

Two mechanically interlocked power switches.

### OPERATION

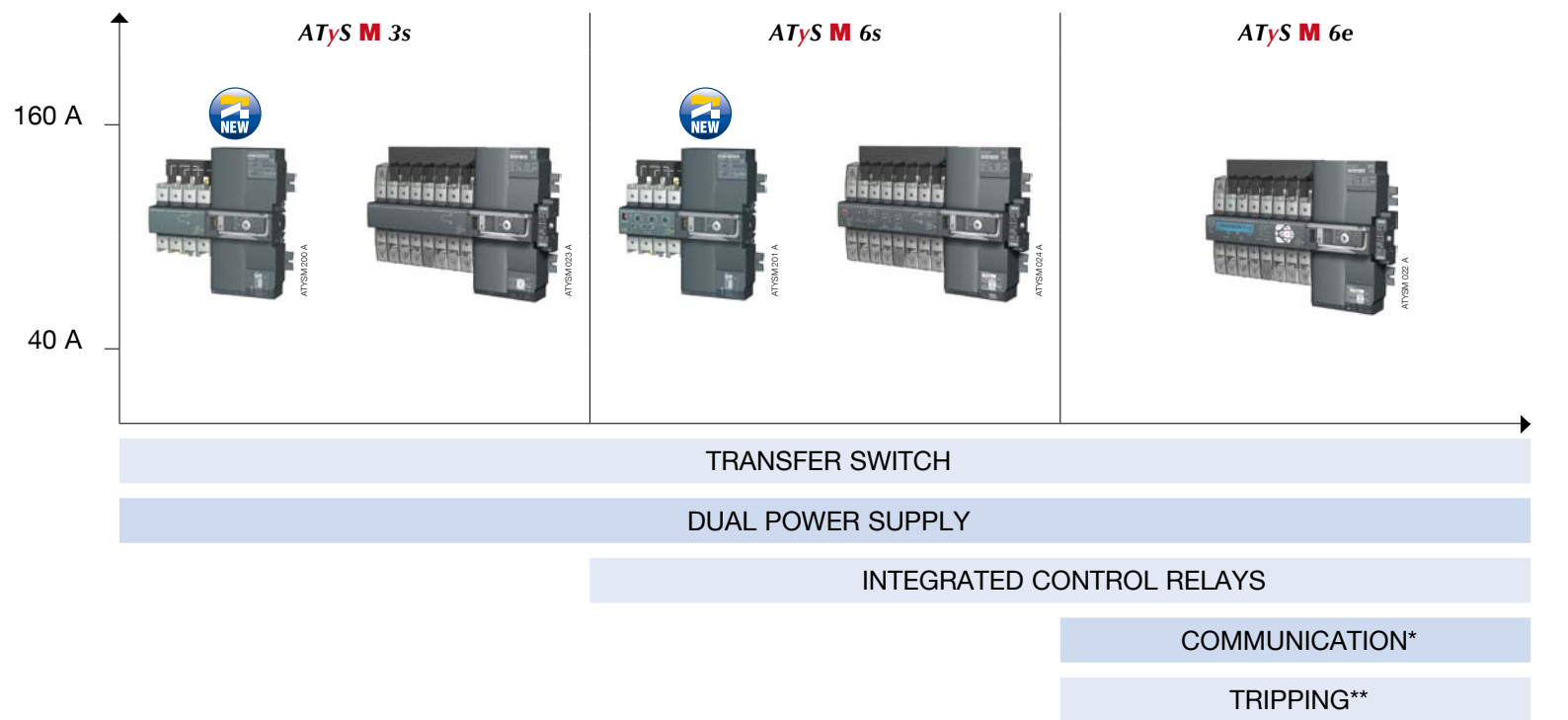
A configurable automatic control associated with an emergency manual operation.

### MONITORING

A built-in configuration and control interface, simple or advanced.

### INSTALLATION

A modular product adapted to any type of enclosure integration.



\* Special version. \*\* Return-to-zero without external power source.

## Additional Socomec changeover & by-pass solutions

### > An ATS BY-PASS range

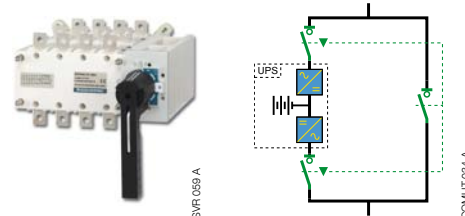


### > An extended ATyS range up to 3200 A\*



\* Also available in offer in enclosure.

### > A BY-PASS range



### > SIRCOVER manual changeover range



# Innovation dedicated to automatic transfer applications

## An optimised switching system

### > Switching technology

- An on load switch disconnecter providing safety isolation combined with high making and breaking characteristics.
- Safety isolation.
- Stable positions.

### > A new switching module combining

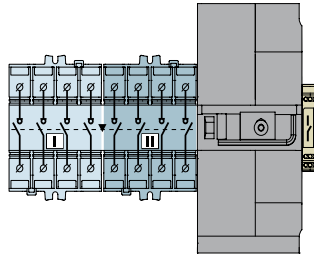
- High dynamic withstand.
- Fast operation.
- High number of operations.



ATYSM 038 A

### > Two power switches

Mechanically and electrically interlocked.



ATYSM 032 B

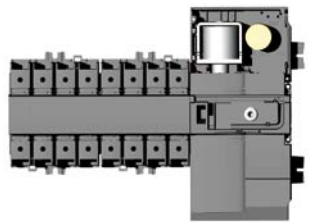
## Fast electrical operation

### > Electromagnetic control

Enables fast I ↔ II switching operation < 180 ms.

### > An available energy storage device

Enables return to 0 position feature upon loss of network without any power source available (ATyS M 6e).



ATYSM 037 A

## Operation



> Automatic/Manual operating mode selection via the protective sealable cover

> Operation using a standard allen key.

> Padlocking function configurable in position 0 or in all three positions I - 0 - II.

## A dedicated control interface

### > ATyS M 3s: remote controlled



### > ATyS M 6s: simple and ergonomic

Configurable automatic transfer switch cycles, with stable positions.

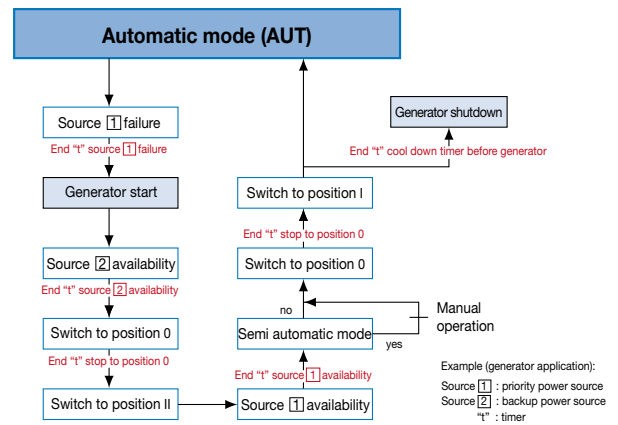


### > ATyS M 6e: advanced and programmable

Fully programmable automatic transfer switch cycles ensuring position stability or return to 0 position feature upon loss of network.



## A dedicated control logic



ATYS 028 E GB

## Flexible integration

### > Enclosed offer



ATYSM 196 A



COFF 306 A

	Single phase			Three phase		
	ATyS M 3s	ATyS M 6s	ATyS M 3s	ATyS M 6s	ATyS M 6e	
40 A	1823 2004	1854 2004	1823 4004	1854 4004	1884 4004	
63 A	1823 2006	1854 2006	1823 4006	1854 4006	1884 4006	
80 A	1823 2008	1854 2008	1823 4008	1854 4008	1884 4008	
100 A	1823 2010	1854 2010	1823 4010	1854 4010	1884 4010	
125 A	1823 2012	1854 2012	1823 4012	1854 4012	1884 4012	
160 A	1823 2016	1854 2016	1823 4016	1854 4016	1884 4016	

# Changeover switching for industrial and commercial low voltage applications

**Six ratings 40/63/80/100/125/160 A**  
**2 or 4 pole**

ATyS M 3s

ATyS M 6s

ATyS M 6e



Electrical operation I - 0 - II

Automatic product

Automatic product

APPLICATIONS	Electrical operation I - 0 - II	Automatic product	Automatic product
Normal/Back-up without automatic controller	•		
Normal/Back-up with built-in automatic controller		•	•
Stable positions	•	•	•
Load changeover	•		
<b>FUNCTIONS</b>			
<b>SUPPLY</b>			
External	•		
Integrated		•	•
<b>OPERATION</b>			
Back-up manual operation of the 3 positions, configurable	•	•	•
Electrical (dry contact) control of positions I, 0 and II	•		•*
Automatic control of positions I, 0 and II		•	•
Return to 0 position feature upon loss of source			•
<b>MONITORING</b>			
3 voltages on networks I and II		•	•
Frequency on networks I and II		•	•
Phase rotation on networks I and II			•
Asymmetry of networks I and II			•
<b>AUTOMATIC CONTROLLER CONFIGURATION</b>			
By potentiometer and micro-switch		•	
By screen + keyboard			•
V <sub>n</sub> , F <sub>n</sub> , V threshold, F threshold		•	•
Driving with or without priority		•	•
Adjustable operating timers		•	•
Control type (impulse or switch/contactor)	•		
<b>DISPLAY</b>			
Position, fully visualised breaking	•	•	•
Leds: source status, automatic mode, fault		•	•
Leds: switch positions, supply, tests, control			•
V, F, timers, number of operations, last event			•
<b>REMOTE CONTROL</b>			
<b>Outputs</b>			
Generator set start/stop control		•	•
Product available (not fault and not manual mode)		•	•*
Programmable output (source, availability, fault)			•*
<b>Inputs</b>			
Test on load		•	•*
Retransfer		•	•*
Automatic mode inhibit		•	•*
Other programmable inputs (test off-load, position control, etc.)			•*
<b>Remote control</b>			
Human/Machine Interface (ATyS D10 or D20)			•
RS485 communication (JBUS/MODBUS)			•**

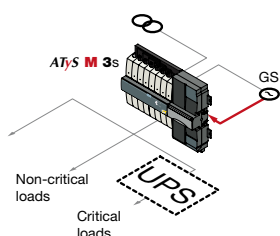
\* 3 inputs / 3 outputs (programmable).

\*\* Product reference is different: the communication by connection RS485 (JBUS/MODBUS) allows to connect until 31 ATyS M with a PC or a programmable machine over 1500 m.

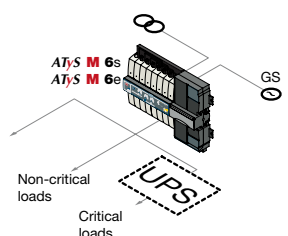
## A product for all changeover applications from 40 to 160 A

### > Generator Network/Set

- Generator set control

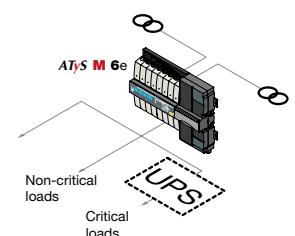
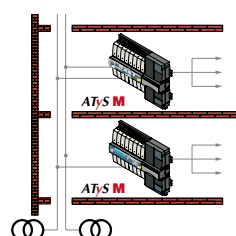


- ATyS solution



### > Network/Network

- Building services



# A complete range of accessories

## > Bridging bars

A dedicated, compact accessory providing changeover output common point keeping cable connection capacity complete (protection index IP2X).

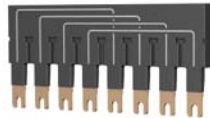
### Single phase



40 to 125 A: **1309 2006**  
160 A: **1309 2016**

ATYSM 198 A

### Three phase



40 to 125 A: **1309 4006**  
160 A: **1309 4016**

ATYSM 025 A

## > Single pole voltage sensing tap

Provides two terminals per pole for voltage sensing or power supply requirements.

It can be fitted on any pole keeping cable connection capacity complete.



1399 4006

ATYSM 026 A

## > Auxiliary contacts

Each product can be equipped with 2 auxiliary contacts.

It integrates one NO / NC contact per position (I, O, II).

Characteristics: 250 VAC / 5A maximum.



1309 0001

ATYSM 028 A

## > Terminal shrouds (pair)

Provides protection against direct contact with the connection terminals or parts.

A specific front hole enables access to terminals' tightening screws for thermographic measurement or voltage sensing.



2294 4016

ATYSM 027 A

## > Sealable cover (for ATyS M 6s)

Controls settings cover to avoid ATyS M 6s parameters access due to a sealable facility.

### Single phase



1359 2000

ATYSM 199 A

### Three phase



1359 0000

ATYSM 043 A

## > Remote interfaces ATyS D10 or D20 (for ATyS M 6e)

To display source availability and changeover state on the front of a panel.

RJ45 cable connection.



ATYS 564 C

1599 2010



ATYS 565 C

1599 2020

## HEAD OFFICE

### SOCOMEQ GROUP

S.A. SOCOMEQ capital 11 149 200 €  
R.C.S. Strasbourg B 548 500 149  
B.P. 60010 - 1, rue de Westhouse  
F-67235 Benfeld Cedex - FRANCE

## INTERNATIONAL SALES DEPARTMENT

### SOCOMEQ

1, rue de Westhouse - B.P. 60010  
F - 67235 Benfeld Cedex - FRANCE  
Tel. +33 (0)3 88 57 41 41 - Fax +33 (0)3 88 74 08 00  
info.scp.isd@socomec.com

[www.socomec.com](http://www.socomec.com)

Non contractual document. © 2011, Socomec SA. All rights reserved.

